

# AlphaView<sup>®</sup> Imaging and Analysis Software



## Intuitive controls, easy navigation.

AlphaView imaging and analysis software provides easy-to-use software tools that rapidly generate results and images for publications and presentations. Analysis tools for protein and nucleotide gels, Western blots, microtiter plates, arrays, and colony counting are designed to be intuitive from the first use. Customized reporting facilitates recordkeeping.

### Improve your workflow with:

- Streamlined analysis modules for common tasks, with clickable help available at each step
- AlphaNavigator™, a wizard that walks first-time users through image acquisition for optimized imaging without prior training
- The ability to save imaging and analysis protocols and recall them in an instant for increased consistency in data collection across experiments
- Custom report generation for easy record keeping

AlphaView comes standard with the FluorChem<sup>®</sup> FC2, HD2, Xplor and Q and Alphalmager<sup>®</sup> EC, EP and HP imagers, and is available as a stand-alone software analysis package, compatible with the FluorChem and Alphalmager families of imaging systems.

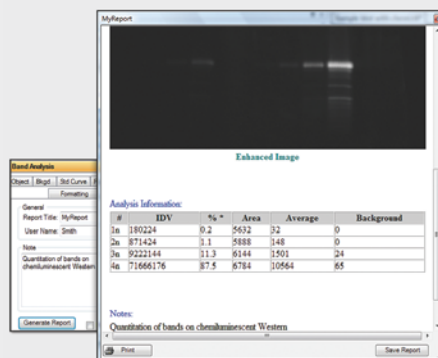
### AlphaNavigator™

- Guides user through image acquisition
- Save imaging protocol for future use



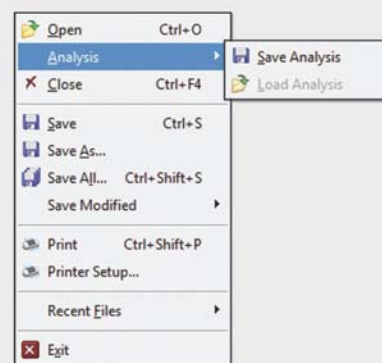
### Report Generation

- Print and save analysis results and images for record keeping
- Flexible design; choose what to include, and print or save for your records
- Save reports in HTML or PDF format



### Save & Archive Your Analysis

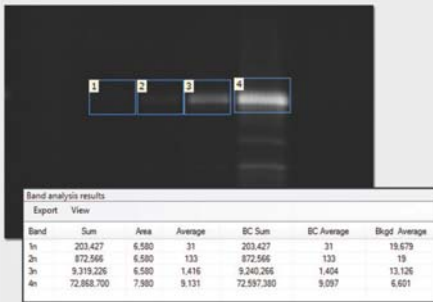
- Generate data, and save your analysis protocol for easy future recall



# ALPHAVIEW® ANALYSIS TOOLS PROVIDE FAST RESULTS

## Band Analysis

- Quickly generate quantitative data of band and object intensities
- Build quantitative calibration curves based on known standards



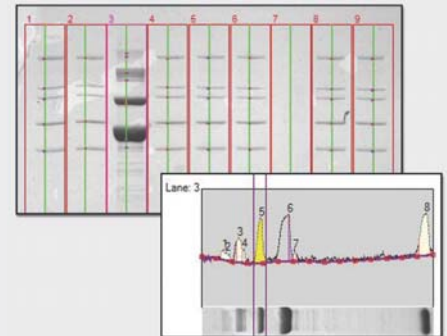
## Molecular Weight Analysis

- Calculate unknown molecular weight using standards
- Detect bands automatically and get immediate results



## Lane Profile Analysis

- Automatic and manual peak detection
- Allows for gel smiling and distortion correction with grid skewing feature
- Easily set minimal peak detection limit



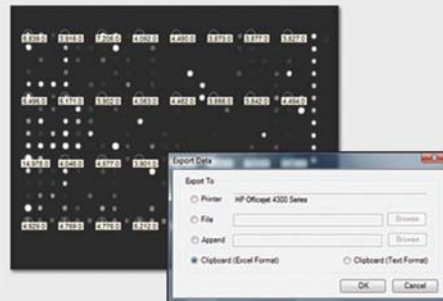
## Multi-image Viewing Mode

- Multiple images can be viewed simultaneously
- Allows direct side-by-side visual comparisons



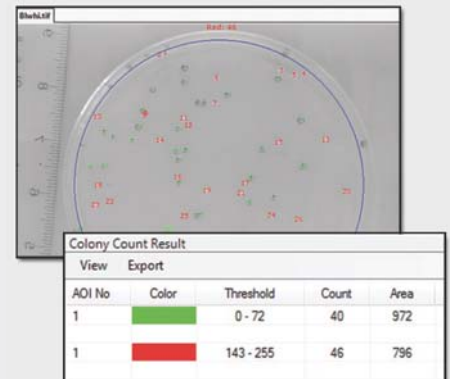
## Microtiter Plate, Elispot, Array & Dot Blot Analysis

- Single well, 96-, 384- and up to 10,000 wells/spots configuration



## Colony Yeast Counting

- Simultaneous counting of multiple areas
- Dual color counting
- Automatic counting with easy manual spot addition or subtraction



**Biozym**  
Science is our business

**Biozym Scientific GmbH Postfach, D-31833 Hess. Oldendorf**  
Tel.: 0 5152/9020, Fax: 05152/2070  
Mail: support@biozym.com

**Biozym Biotech Trading GmbH Wehlstraße 27 b, A-1200 Wien**  
Tel.: 01 / 334 0156 0, Fax: 01 / 334 0156 88  
Mail: wien@biozym.com

**Alpha Innotech**  
Gel Imaging Systems for Life Sciences

www.alphainnotech.com • 1.800.795.5556 • info@alphainnotech.com

Copyright © 2009 Alpha Innotech Corp. All rights reserved. AlphaNavigator is a trademark of the Company. The Alpha Innotech logo, wordmarks AlphaView, FluorChem and Alphamager and the intertwined helix design are registered trademarks of the Company. All other trademarks, service marks and tradenames appearing in this brochure are the property of their respective owners.