

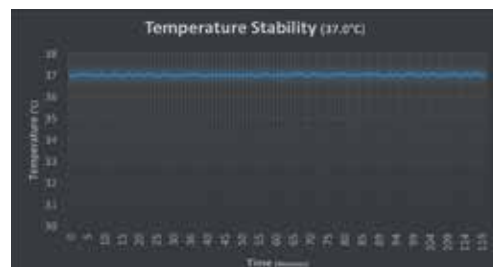


Heat • Shake • CO₂

The ONLY CO₂ Incubator with a MAGic Clamp™ Shaker



- + Integral orbital shaker, ideal for suspension cell culture
- + Six side direct heating, provides uniform temperature
- + Stainless steel chamber (SS316), with round corners for easy cleaning
- + Dual beam IR sensor, fast response time for precise control over CO₂%



Temperature Stability Chart: Chamber temperature for a 2 hour duration following stabilization (within 0.1 °C) at 37.0 °C.

	<h3>MAGic Clamp™ Platform</h3> <p>Optional MAGic Clamp accessories (Patented) are available for attaching erlenmeyer flasks, microplates, test tube racks and other vessels to the shaking platform. This patented design allows for instant, magnetic attachment of clamps without the use of tools, screws and other hardware.</p>	<h3>Sealed Inner Glass Door</h3> <p>The inner glass door is transparent, allowing visualization of samples without fully exposing the chamber to the ambient environment, improving performance and reducing energy waste.</p>	
	<h3>Heated Door</h3> <p>The six sided, direct heating design provides the highest level of temperature uniformity (±0.5). In addition, the heated door prevents the forming of condensation on the inner glass door, for improved sample visualization.</p>	<h3>Adjustable, pull out shelf</h3> <p>An included stainless steel shelf allows shaking of suspended cells while simultaneously incubating adherent cells. This static shelf can be pulled outward for easy loading/unloading and can be adjusted or (removed) for shaking taller vessels.</p>	

Technical Data:

Temperature Range:	Ambient +5° to 60 °C (Increments: 0.1 °C)
Temperature Accuracy / Uniformity / Stability	± 0.5 °C / ± 0.5 °C / 0.1 °C (at 37 °C)
Speed Range:	30 to 300 rpm (Increments: 1 rpm)
Mixing Orbit:	19 mm
CO ₂ Range:	0 to 20% (Increment: 0.1%)
CO ₂ Accuracy:	± 0.1%
Time Range:	1 min. to 48 hours (or continuous)
Platform Dimensions:	23.5 x 29 cm
Chamber Dimensions:	33.5 x 26 x 39.2 cm (46 L)
Exterior Dimensions:	42 x 46.5 x 55.3 cm
Weight:	40.1 kg
Electrical:	230V, 50-60Hz, 350W
Warranty:	2 Years

Maximum Capacity:

50 ml Flasks	125 ml Flasks	250 ml Flasks	500 ml Flasks	1000 ml Flasks	Micro-plates	15 ml Tubes	50 ml Tubes
20	12	8	5	4	4	64	30

Ordering Information:

Item No.	Description:
55H3501-E	Incu-Shaker CO ₂ Mini, with non-slip rubber mat platform
55H2300-REG	Optional CO ₂ Gas Regulator
	MAGic Clamp Accessories
55H1000-MR	MAGic Clamp Universal Platform, 24,1 x 29,2 cm
55H1000-MR-CMB	MAGic Clamp Adjustable Flask Clamp, for 125, 250 & 500 ml Erlenmeyer flasks (max. 12 x 125 ml, 8 x 250 ml or 5 x 500 ml)
55H1000-MR-50	MAGic Clamp Flask Clamp, for 50 ml Erlenmeyer flask (max. 20)
55H1000-MR-125	MAGic Clamp Flask Clamp, for 125 ml Erlenmeyer flask (max. 12)
55H1000-MR-250	MAGic Clamp Flask Clamp, for 250 ml Erlenmeyer flask (max. 8)
55H1000-MR-500	MAGic Clamp Flask Clamp, for 500 ml Erlenmeyer flask (max. 5)
55H1000-MR-1000	MAGic Clamp Flask Clamp, for 1L Erlenmeyer flask (max. 4)
55H1000-MR-MP	MAGic Clamp Flask Clamp, for microplates (max. 4)
55H1000-MR-T15	MAGic Clamp Tube Rack, 32 x 15 ml (max. 2)
55H1000-MR-T50	MAGic Clamp Tube Rack, 15 x 50 ml (max. 2)
55H1000-MR-1550	MAGic Clamp Tube Rack, 32 x 15 ml (max. 1)
55H1000-MR-T600	MAGic Clamp Tube Rack, 4 x 500/600 ml bottles
55H1000-MR-TSR	Slanted Rack Holder, holds tube racks at an adjustable angle