



 **myra+**

**Automated qPCR System**

Sample | Setup | Analysis | Result



## Automated qPCR System

Combining next generation qPCR technology with state of the art liquid handling hardware. The Myra+ is an automated molecular instrument ideal for any lab or researcher.

## Sample to Answer



## Sample Prep

Myra+ is equipped to handle your sample preparation needs, whether you're using standard magnetic-based extraction methods or going directly to PCR.

The device is versatile enough to process various sample formats. For samples that include swabs, Myra+ is uniquely designed to prevent collisions by automatically pushing the swab aside, ensuring smooth operation.

## V-caps

Our proprietary V-cap tubes simplify the process of loading qPCR reactions directly into the on-deck Mic cycler. The design uses centrifugal force to push the liquid through an aperture in the cap and into the tube, beneath the pre-filled oil, ensuring efficient and accurate sample processing.



## Open Platform

There's no need to be confined to costly micro-fluidic cartridges. Experience flexibility with your assays and protocols with Myra+.

Features include:

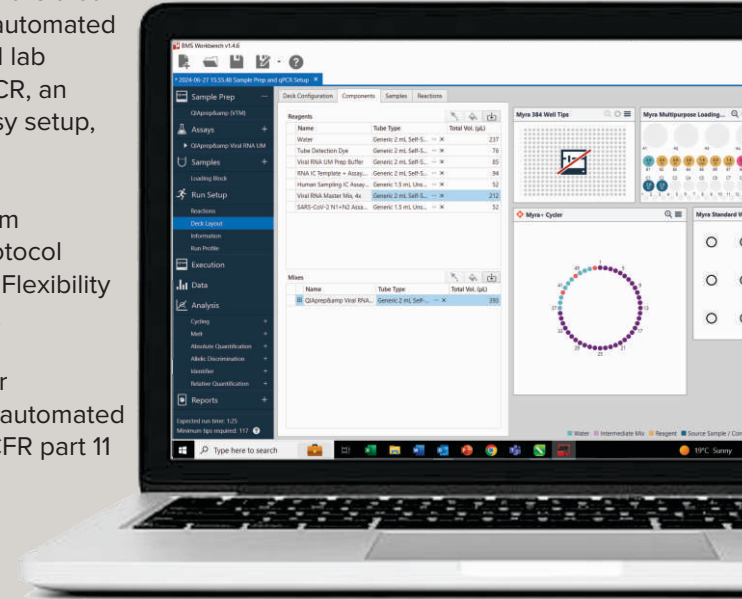
- Vortex mixing
- Multi-tube aspiration
- Film piercing
- Extensive consumable library
- Lyophilized reagent compatible

## Intuitive Software

The Myra+ boasts software that stands out from other automated platforms. For standard lab operations such as qPCR, an intuitive UI enables easy setup, running, and analysis.

Create your own custom protocols using our protocol development function. Flexibility without the complexity.

LIMS compatibility, user permission levels, and automated analysis functions. 21 CFR part 11 compliant.



## qPCR Runs

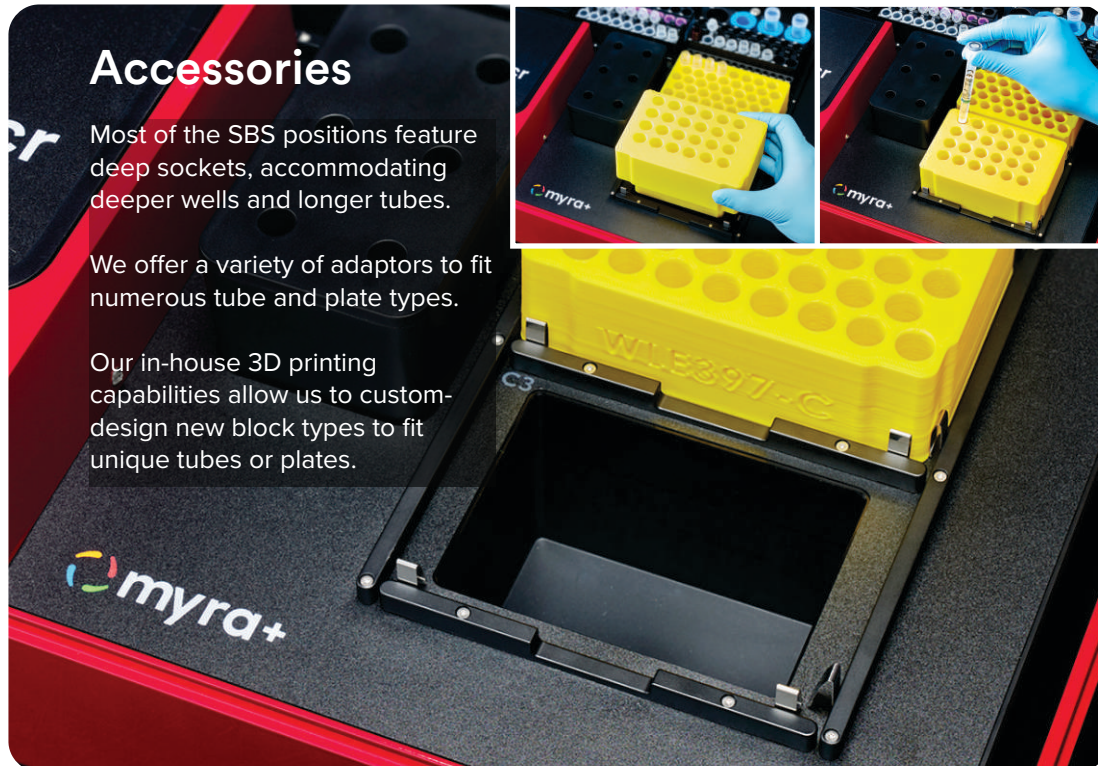
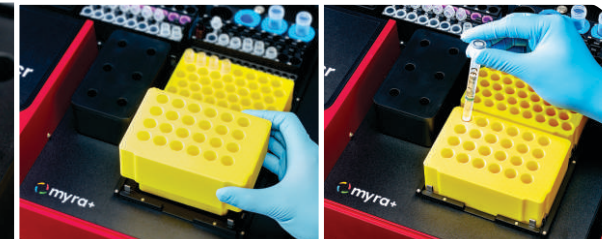
Samples and reactions are loaded directly into the V-cap tubes within the on-deck Mic qPCR cycler. The system is designed to monitor for the presence of tubes and prevent the loading of tubes that might contain the previous run reactions, thereby avoiding contamination issues.

## Accessories

Most of the SBS positions feature deep sockets, accommodating deeper wells and longer tubes.

We offer a variety of adaptors to fit numerous tube and plate types.

Our in-house 3D printing capabilities allow us to custom-design new block types to fit unique tubes or plates.





# Specifications



468 mm

18 kg



520 mm



356 mm  
(635 mm lid open)

Closed loop, 100  $\mu$ m resolution  
Pressure sensing  
High precision camera  
Single or multi-dispense

Pipette

Volume 1 - 50  $\mu$ L  
Tips per rack 384  
Precision 1  $\mu$ L 5% CV  
5 - 50  $\mu$ L 1% CV  
Accuracy 1  $\mu$ L < 10%  
5 - 50  $\mu$ L 1%

Thermal Performance

Temp. accuracy  $\pm 0.25^{\circ}\text{C}$   
Temp. uniformity  $\pm 0.10^{\circ}\text{C}$   
Sample ramp rates Heating:  $4^{\circ}\text{C/s}$   
Cooling:  $3^{\circ}\text{C/s}$   
Temperature range 35 -  $99^{\circ}\text{C}$  ( $40^{\circ}\text{C}$  min when cycling)

Communication Connection type USB 2.0  
Min. PC requirements Intel Core i5 or equivalent  
8 GB RAM, 1 GB disk space  
1366 x 768 display

Contamination control

Tip disposal Internal enclosed waste tub  
UV decontamination High intensity 70 mW 280 nm UV LED  
HEPA air filtration 99.98% at 0.3  $\mu$ m

Optical

Detectors 4x Photodiode  
Excitation sources 4x High energy LED  
Acquisition time 1 s

Environment Temperature range 18 -  $30^{\circ}\text{C}$   
Humidity range 20 - 80%

Reaction Vessels

Samples per instrument 48  
Reaction volume 5 - 25  $\mu$ L

Designed and manufactured in Australia by

**bms**  
bio molecular systems



Scan to Learn More

**Biozym**  
SCIENCE IS OUR BUSINESS  
[www.biozym.com](http://www.biozym.com)

**Biozym Scientific GmbH**  
Tel.: +49 (0) 5152 9020  
Mail: [support@biozym.com](mailto:support@biozym.com)



**Biozym Biotech Trading GmbH**  
Tel.: +43 (0) 1 334 0156 0  
Mail: [support@biozym.com](mailto:support@biozym.com)