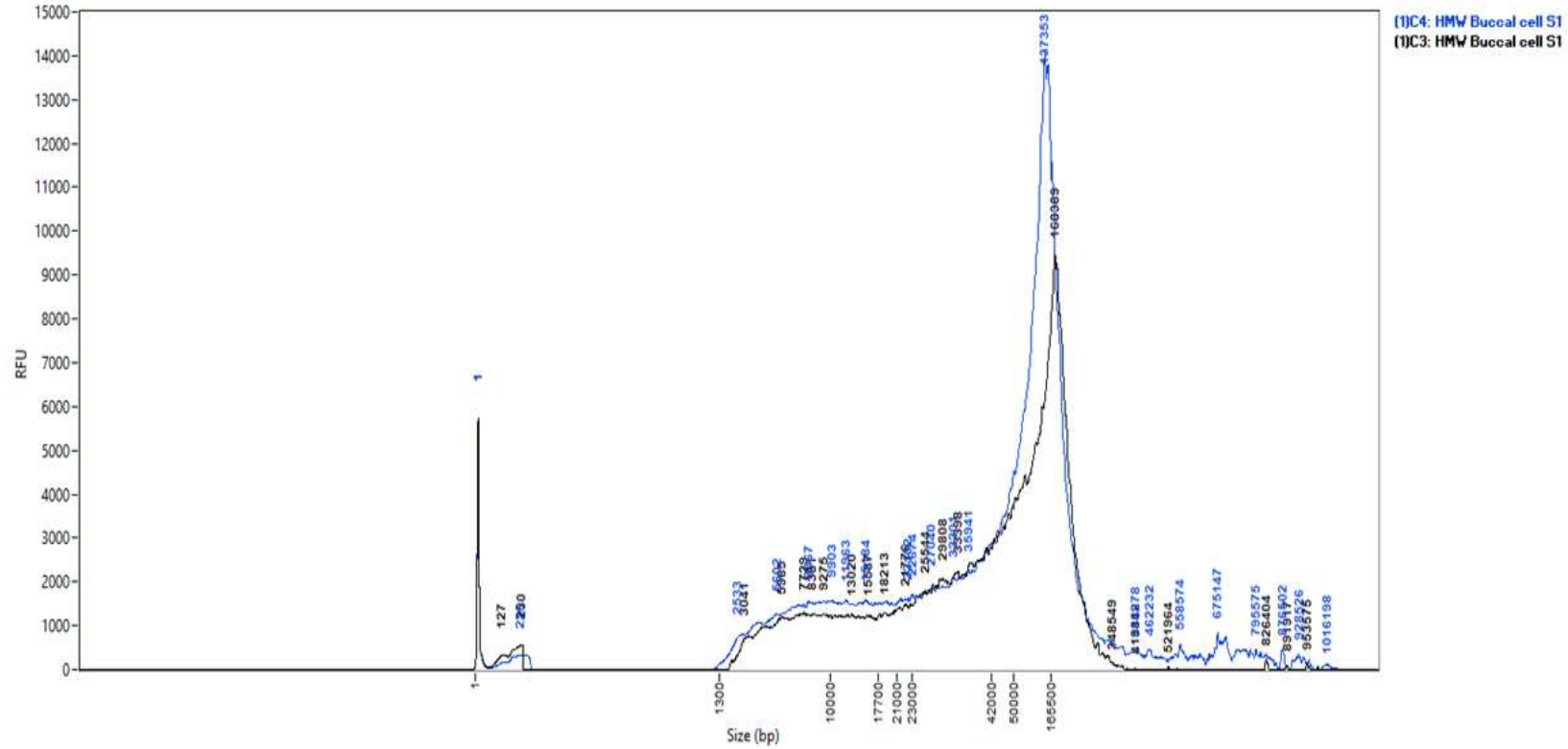
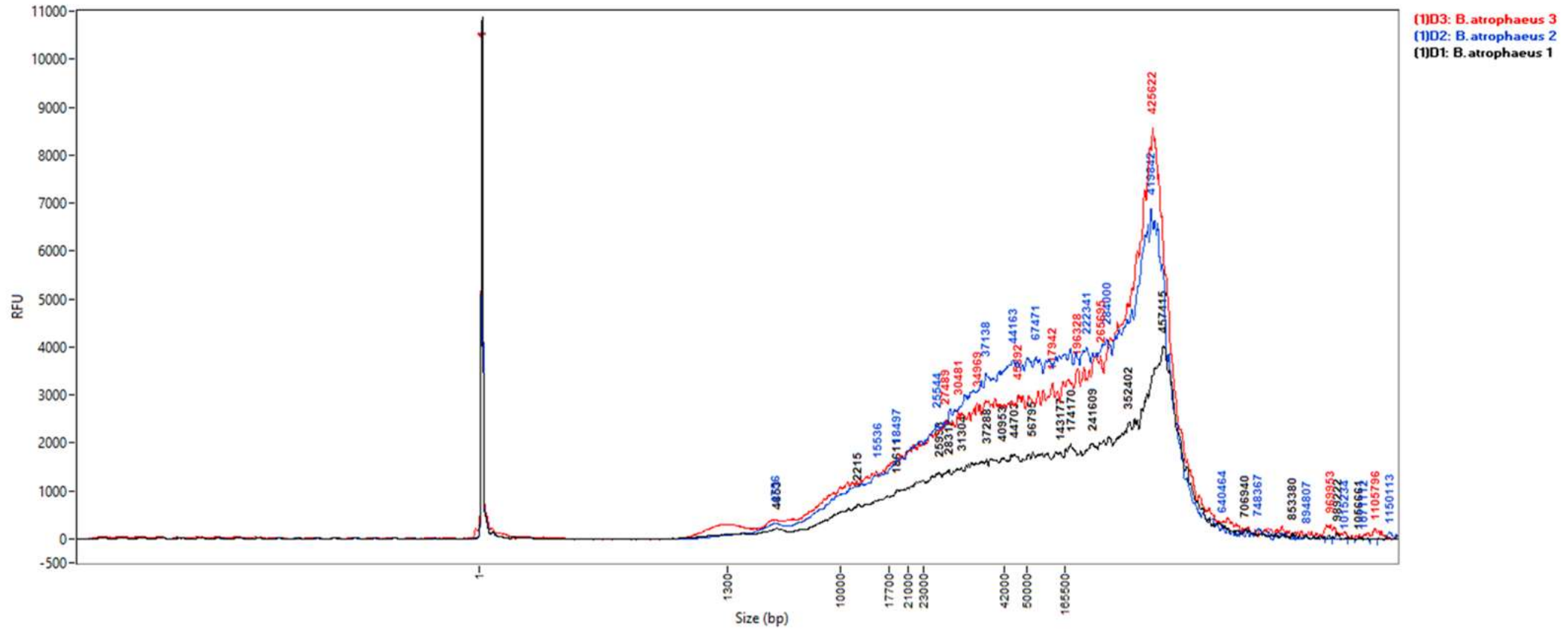


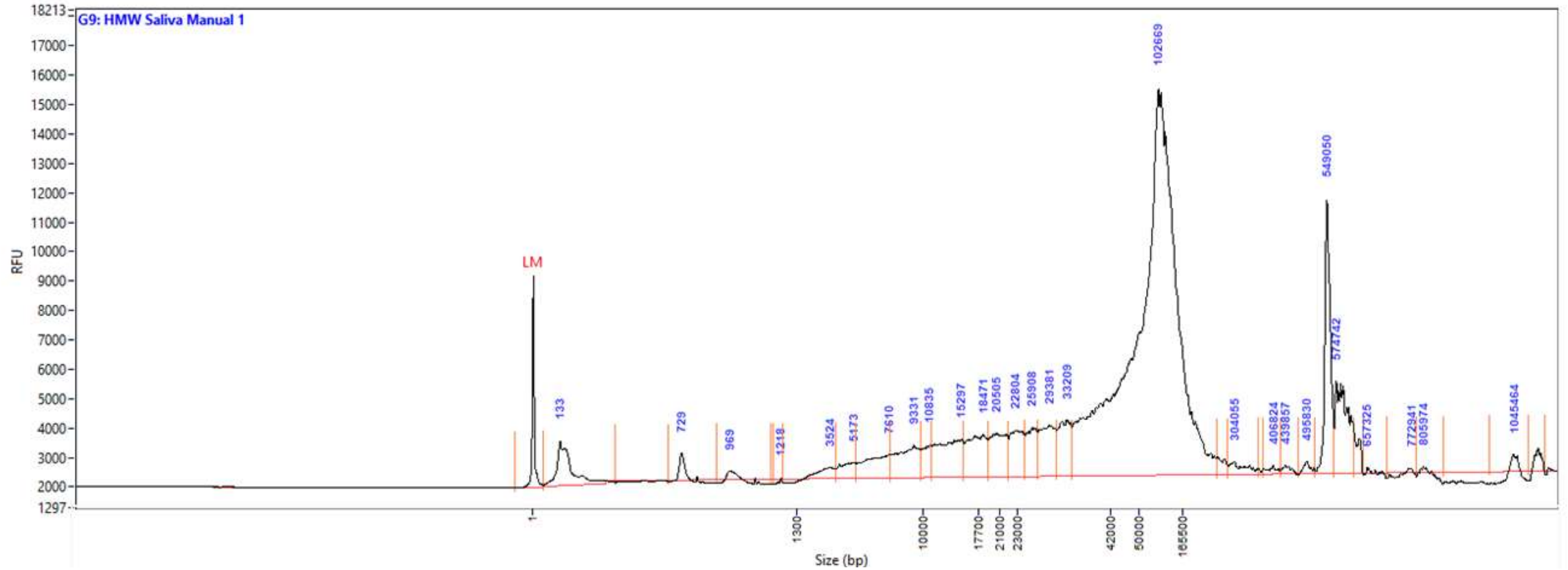
High Molecular Weight DNA Extraction from whole blood.



High Molecular Weight DNA Extraction from buccal cells.



High Molecular Weight DNA Extraction from *Bacillus atrophaeus*.



High Molecular Weight DNA Extraction from saliva

DNA Purity and Yield of the Extracted HMW DNA

Sample Matrix	Sample Input Volume	Average Purity (A260/A280)	Average Purity (A260/A230)	Average Yield (ug)
Whole Blood	200 µL	1.8	1.9	4-6
Saliva	200 µL	1.8	1.7-1.8	4-6
Buccal cells	200 µL	1.8	1.7-1.8	2-5
Bacteria (<i>Bacillus atrophaeus</i>)	OD600 = 1 or near 1 (pellet)	1.8	1.7-1.8	3-5