

# AZURE IMAGING SYSTEMS

PERFORMANCE WITHOUT COMPROMISE

600 | 500 | 400 | 300 | 280 | 200



# RELIABLE, REPRODUCIBLE IMAGING FOR WESTERN BLOTS AND MORE

Azure Biosystems provides a unified Western Blot workflow, from the high-performance imaging system and analysis software to the reagents and consumables. Our imaging systems give you the flexibility you need for your research, while delivering solutions for quantitative Western Blot imaging.



Each Azure Imaging System provides:

- **Flexibility**—Sensitivity and performance for fluorescence, chemiluminescence, trans-UV & visible, and true-color imaging with 4.8 OD dynamic range. High resolution CCD cameras with fast lens options, adjustable lens and illumination settings, trays with adjustable distance to the camera, and auto-detection and pre-calibrated focus.
- **Quantitative accuracy**—Designed for generating publication quality images and easy quantitation. Our reagents, imaging system, and software work seamlessly together to help you follow best practices for Western Blot publication.
- **Intelligent workflow**—Our user interface allows total customization over imaging protocols, while ensuring repeatability from sample to sample. Our systems feature Auto-Focus, Auto-Illumination and Filter Control, and Auto-Image Capture. An integrated touchscreen allows ease of use and it can easily be controlled by an external PC, if required.
- **Data integrity**—Azure Biosystems meets the standards for publication in all major journals, and additionally offers software to enable 21 CFR Part 11 Compliance.

A. NIR WESTERN BLOT

B. CHEMI WESTERN BLOT

C. CHEMI WB WITH COLOR MARKER

D. 3 COLOR FLUORESCENT WB

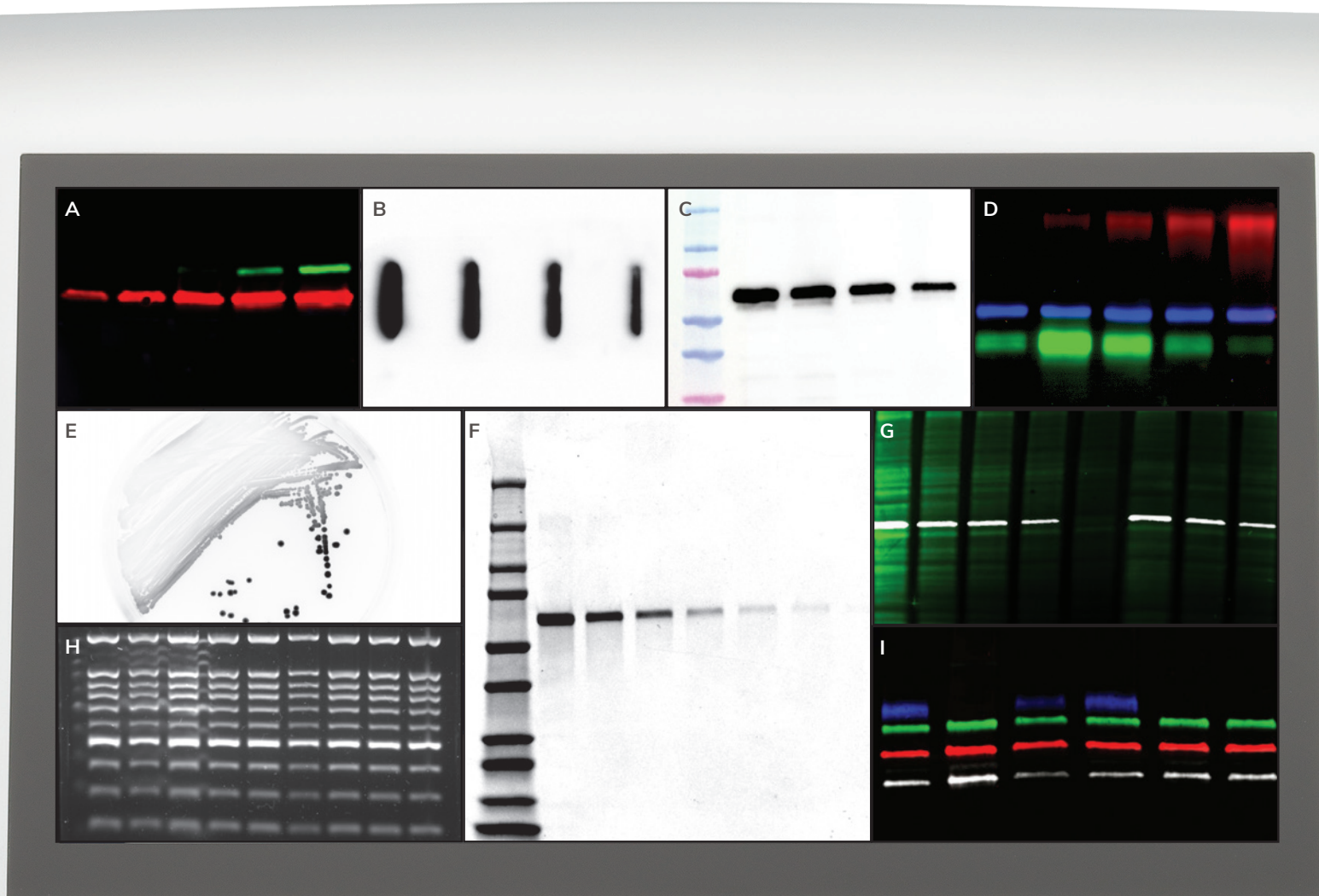
E. BIOLUMINESCENT BACTERIA

F. PROTEIN GEL

G. WESTERN BLOT STAINED WITH AZURERED

H. DNA GEL

I. 4 COLOR FLUORESCENT WB



# CHOOSE YOUR SYSTEM



**AZURE 600**



**AZURE 500**



**AZURE 400**



**AZURE 300**



**AZURE 280**



**AZURE 200**

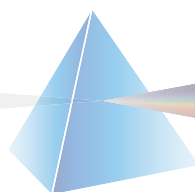


Upgrades available for chemiluminescence, RGB fluorescence and NIR fluorescence.

**Q Module**—Upgrade the Azure 500 and Azure 300 to include a green fluorescence Q module to add a dedicated channel for total protein normalization in quantitative Western blots.

## LIGHT SOURCES

The flexibility of Azure Imaging Systems comes from the wide variety of light sources and filters to detect fluorescent dyes up to 832nm.



302 nm  
365 nm  
472 nm  
524 nm  
628 nm  
685 nm  
784 nm



# FLEXIBILITY FOR YOUR APPLICATIONS

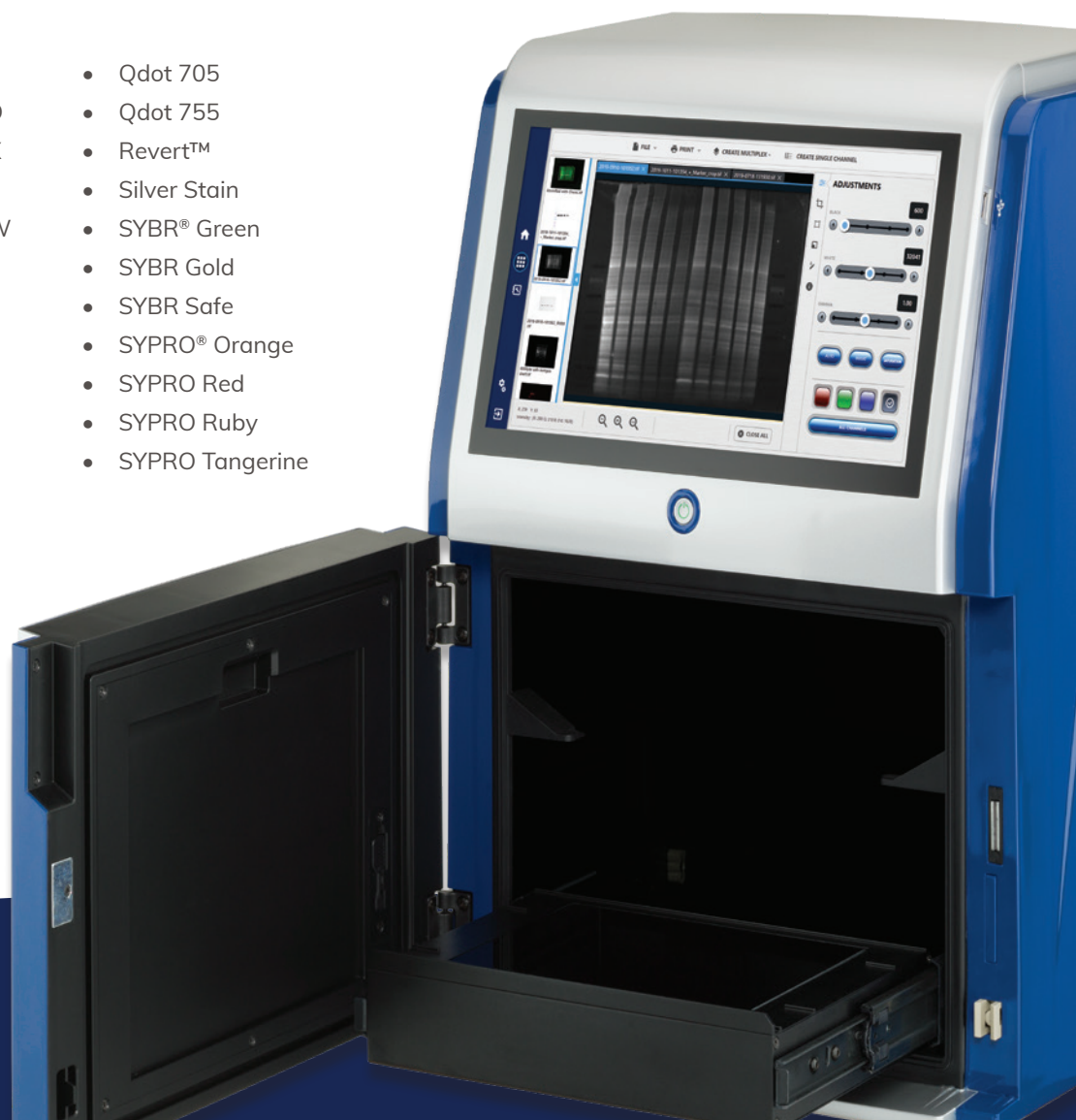
The Azure Imaging Systems are multichannel, multimodal imagers, with near-infrared, visible light, and UV excitation channels. Detect Cy dyes, Alexa dyes, Safe dyes, UV-activated stain for protein gels (tri-halo compound stain), and more.

## A SNAPSHOT OF COMPATIBLE DYES\*

- |                                |                            |                         |                             |
|--------------------------------|----------------------------|-------------------------|-----------------------------|
| • Azure TotalStain Q           | • Orange                   | • IRDye 680LT           | • Qdot 705                  |
| • AzureRed                     | • Cy <sup>®</sup> 2        | • IRDye 680RD           | • Qdot 755                  |
| • AzureSpectra 800             | • Cy <sup>®</sup> 3        | • IRDye 700DX           | • Revert <sup>™</sup>       |
| • AzureSpectra 700             | • Cy <sup>®</sup> 5        | • IRDye 750             | • Silver Stain              |
| • AzureSpectra 650             | • Deep Purple <sup>™</sup> | • IRDye 800CW           | • SYBR <sup>®</sup> Green   |
| • AzureSpectra 550             | • DyLight <sup>®</sup> 488 | • IRDye 800RS           | • SYBR Gold                 |
| • AzureSpectra 488             | • DyLight 550              | • Ponceau               | • SYBR Safe                 |
| • Alexa Fluor <sup>®</sup> 488 | • DyLight 633              | • Qdot <sup>®</sup> 525 | • SYPRO <sup>®</sup> Orange |
| • Alexa Fluor 546              | • DyLight 650              | • Qdot 565              | • SYPRO Red                 |
| • Alexa Fluor 555              | • DyLight 680              | • Qdot 585              | • SYPRO Ruby                |
| • Alexa Fluor 633              | • DyLight 755              | • Qdot 605              | • SYPRO Tangerine           |
| • Alexa Fluor 647              | • DyLight 800              | • Qdot 655              |                             |
| • Alexa Fluor 680              | • ECL Plex <sup>™</sup>    |                         |                             |
| • Chemiluminescence            | • Ethidium Bromide         |                         |                             |
| • Coomassie Blue               | • GelStar <sup>®</sup>     |                         |                             |
| • Coomassie Fluor <sup>™</sup> | • IRDye <sup>®</sup> 650   |                         |                             |

\*Other dyes are also possible. Compatible dyes depend on your system configuration.

Alexa Fluor<sup>®</sup>, Coomassie Fluor<sup>™</sup>, DyLight<sup>®</sup>, Qdot<sup>®</sup>, SYBR<sup>®</sup>, and SYPRO<sup>®</sup> are trademarks of Thermo Fisher Scientific. Cy3<sup>®</sup>, Cy5<sup>®</sup> and Cy2<sup>®</sup> are registered trademarks of Amersham Biosciences. ECL Plex<sup>™</sup> is a trademark of GE Healthcare. GelStar<sup>®</sup> is a trademark of FMC Corporation. IRDye<sup>®</sup> is a registered trademark and Revert<sup>™</sup> is a trademark of LI-COR, Inc. All other trademarks, service marks and trade names appearing in this brochure are the property of their respective owners.



600 | 500 | 400 | 300 | 280

# CHEMILUMINESCENT IMAGING WITH COLOR MARKER

Just as sensitive as film, but easier and quantitative, our Azure Imaging Systems will revolutionize your chemiluminescent workflows and eliminate your darkroom.

## QUANTITATIVE CHEMILUMINESCENT IMAGING

With Azure Imaging systems, the software notifies you when bands are saturated and are not suitable for quantitation.



Figure 1. Saturation detection prevents errors in quantitation. The same Western Blot was imaged on both x-ray film and the Azure Imaging System. The Azure system detects when CCD saturation occurs and calculates an auto-exposure time to avoid saturated bands.

## HIGH RESOLUTION IMAGING

All of our models provide high resolution imaging perfect for publications. Change the sample to optics distance using adjustable height shelf for enhanced detection. Zoom into the area of interest with ROI imaging to reduce background.

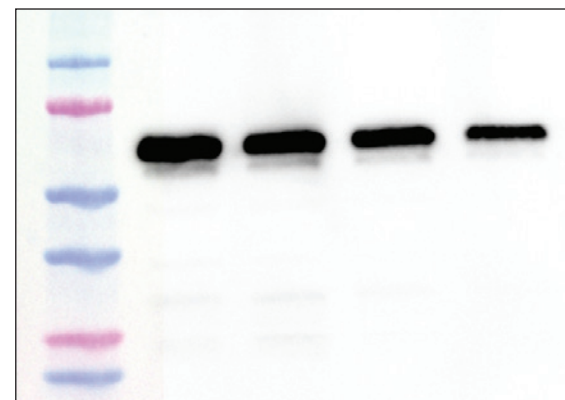


Figure 2. Chemiluminescent Western Blot with Color Marker. 2-fold serial dilutions of HeLa lysate were separated by SDS-PAGE and transferred to a nitrocellulose membrane. The blot was blocked with Azure Chemi Blot Blocking Buffer prior to incubation with rabbit anti-hnRNP K primary antibodies. Signal was detected with Radiance ECL substrate.

## ACCURATE CHEMILUMINESCENT QUANTITATION

A wide dynamic range is necessary to detect weak bands alongside strong bands. Use multiple binning options, from 1x1 to 8x8 binning modes, to collect more light.

Complete flexibility to control imaging, exposure time, and detection of color markers. The acquisition modes include preview, automatic and manual image capture, multiple and cumulative exposures.

Figure 3. Two-fold serial dilutions of HRP labeled antibody were spotted on a nitrocellulose dot-blot, incubated with Radiance Plus, and imaged in the chemiluminescence channel.

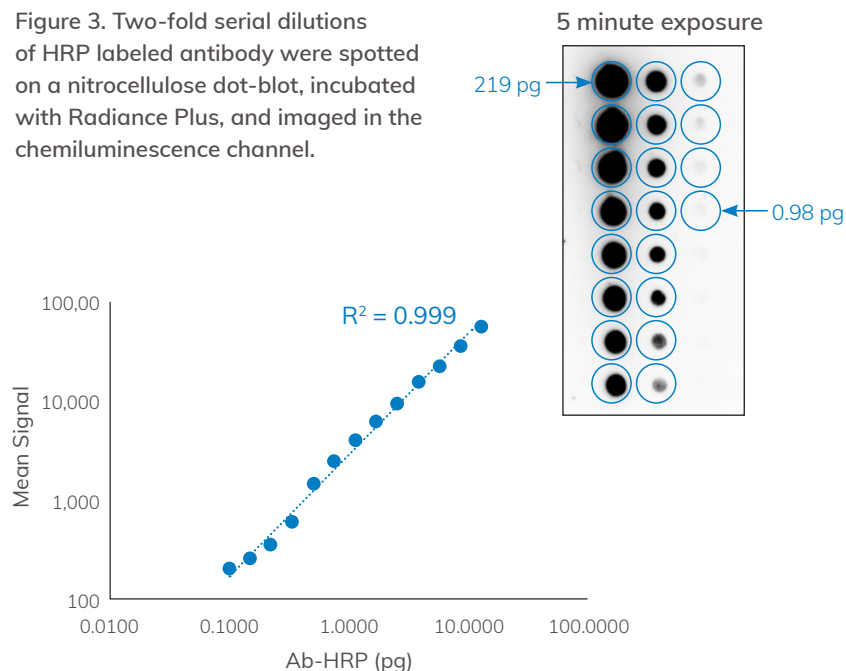


Figure 4. Azure Imaging Systems provide a broad, linear dynamic range to accurately detect strong and weak bands. The accuracy and linearity of the Azure Imaging System and reagents allow you to be confident about differences you see in protein levels.

## UPGRADE TO THE Q MODULE FOR EFFICIENT TOTAL PROTEIN NORMALIZATION FOR QUANTITATIVE WESTERN BLOTS

Solve the issue of housekeeping proteins which lack linearity and normalization accuracy at high protein loads.

## AZURE 300 + Q MODULE = CHEMI IMAGING WITH TPS (TOTAL PROTEIN STAIN)

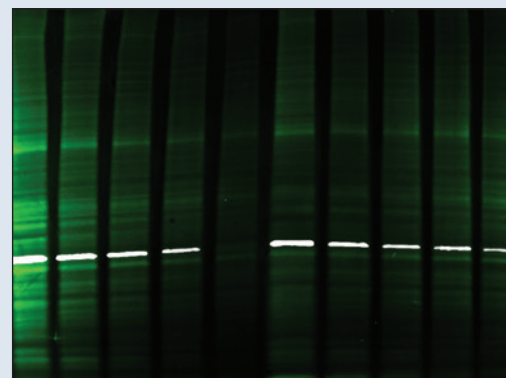


Figure 5. Simultaneous detection of total protein with AzureRed and Chemiluminescent Western Blot. 2-fold serial dilutions of HeLa lysate were separated by SDS-PAGE and transferred to a PVDF membrane. After completion of the semi-dry transfer, the membrane was stained with AzureRed total protein stain. The blot was then blocked with Azure Chemiluminescent Blot Blocking Buffer prior to incubation with mouse anti-GAPDH. The blot was washed 3-times with Azure Blot Washing Buffer then incubated with Azure goat anti-mouse HRP secondary antibody. Chemiluminescent signal was detected with Radiance ECL substrate. After substrate incubation, the blot was imaged to produce an overlay of total protein staining and GAPDH protein. AzureRed is shown in green and GAPDH in gray.

# VISIBLE FLUORESCENCE IMAGING

With high resolution, high sensitivity, low background fluorescence imaging and up to 4 channel fluorescent detection from RGB to NIR spectrum, the Azure Imaging System enables quantitative Western Blotting and a whole lot more. Choose the Azure 400 for visible fluorescence, the Azure 500 for NIR fluorescence, or the Azure 600 for both visible and NIR fluorescence.

## MULTIPLEX DETECTION

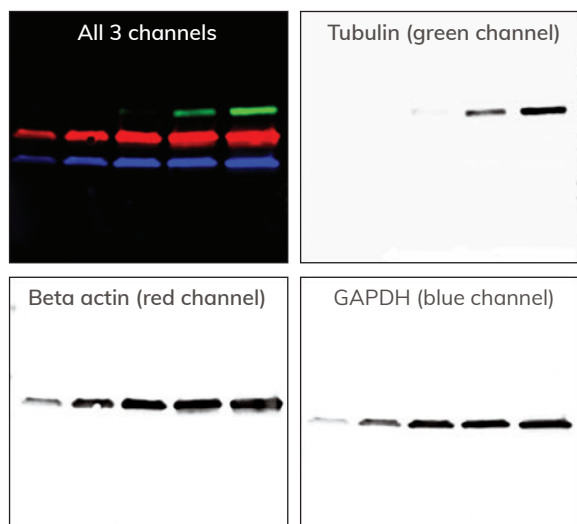


Figure 6. Digital image of 3-color Western Blot using Azure Biosystems 600 imager. Lanes (from left to right) loaded with 1, 2, 5, 10, 20 µg HeLa cell lysate. Probed for tubulin (top), beta actin (middle) and GAPDH (bottom). The following settings were used: Light sources 6/7/4; Exposure time 1s/13s 204ms/677ms; Filter positions 6/7/4; Aperture 6400; Focus 5000/5250/5000; bin level 1x1.

## BEYOND THE BLOT

What truly sets the Azure Imaging System apart from other comparable systems is the ability to image more than just blots. Sure, in-gel fluorescence (Figure 7) and media plates (Figure 8) are not much of a stretch, but it's the Azure Imaging Systems' unmatched depth-of-field that enables imaging more three-dimensional samples such as mice (Figure 9) and zebrafish (Figure 10).

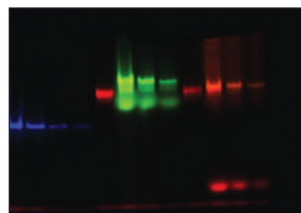


Figure 7. Fluorescent protein in native gel.

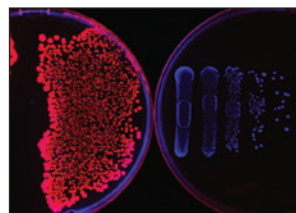


Figure 8. GFP- and mCherry-expressing *E. coli*.

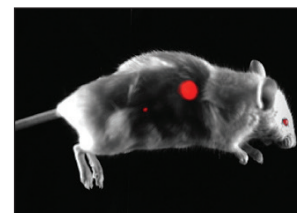


Figure 9. Mouse with RFP-expressing subcutaneous tumor.

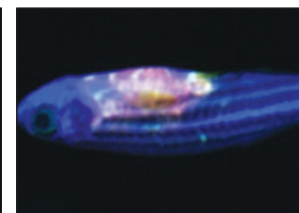
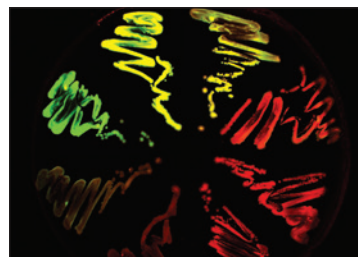


Figure 10. GFP-expressing zebrafish.



## FULL-COLOR RGB LEDs

The Azure Imaging System's full-color multiplex RGB LEDs and filters broaden your imaging capabilities to visible fluorescence wavelengths, increasing flexibility and expanding multiplexing options while keeping system-size compact and value high.



600 | 500

# INFRARED LASER EXCITATION FOR QUANTITATIVE WESTERN BLOT IMAGING IN THE NIR

## IMPROVE YOUR DATA QUALITY

The Azure Imaging Systems' laser technology offers two near-infrared (NIR) detection channels enabling a user to study more than one protein in an assay, even if those targets overlap in molecular weight. Easily resolve and quantify co-migrating bands, such as phosphorylated versus pan-protein forms. Imaging with NIR dyes offers signal stability and low background.

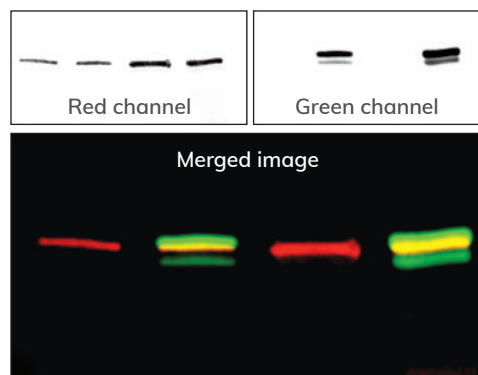


Figure 11. Fluorescent Western Blot of STAT1 and phospho-STAT1. The blot was probed with anti-phospho-STAT1 and anti-STAT1 followed by fluorescent secondary antibodies, and then imaged on Azure Imaging system. Top right is the green channel, using IR-800; top left is the image of the red channel, using IR-700. Bottom image is both channels merged.

## NIR LASERS KEEP SIGNAL HIGH AND BACKGROUND LOW

Our high-performance multiplex NIR lasers and filters deliver robust excitation energy which maximizes emission strength for optimal sensitivity.

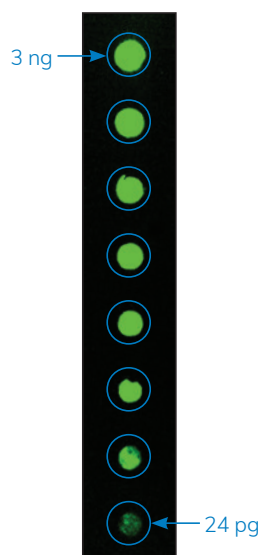


Figure 12. Two-fold serial dilutions of AzureSpectra-800 labeled antibody were spotted on a nitrocellulose dot-blot, and imaged in the 800nm channel for 20 seconds.

## UPGRADE TO THE Q MODULE FOR EFFICIENT TOTAL PROTEIN NORMALIZATION (TPN) OF QUANTITATIVE WESTERN BLOTS

NIR WB + Q MODULE =  
MULTIPLEX IMAGING WITH TPN

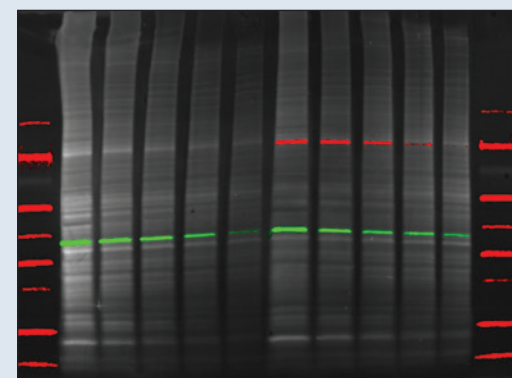
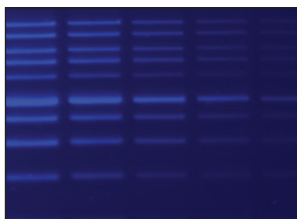


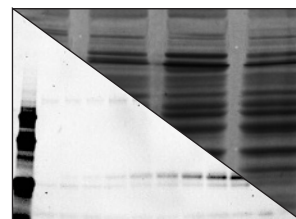
Figure 13. Simultaneous detection of total protein content with AzureRed and two-color NIR Western Blot using AzureSpectra secondary antibodies. 2-fold serial dilutions of HeLa (left) and IFNa-treated HeLa lysate (right) were separated by SDS-PAGE and transferred to a PVDF membrane. After transfer and before blocking, the membrane was stained with AzureRed total protein stain. Then, the membrane was incubated simultaneously with rabbit anti-phospho STAT-3 and mouse anti-GAPDH) primary antibodies. After washing, the blot was incubated simultaneously with AzureSpectra goat anti-rabbit IR700 and AzureSpectra goat anti-mouse IR800 secondary antibodies.



Blue Light Imaging  
SYBR® Safe, SYBR® Gold,  
SYBR® Green

## “SAFE” DYE DETECTION

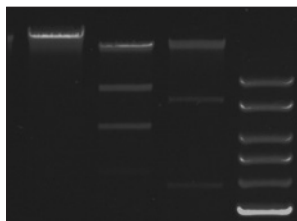
A less toxic alternative to ethidium bromide, less- harmful “Safe” dyes can be imaged with the EPI Blue LEDs standard in all the systems. Epi Blue is recommended as it delivers superior & uniform illumination with reduced background compared to transilluminated blue light.



White Light Imaging  
Coomassie Blue, Silver Stain

## PROTEIN ANALYSIS

Protein gels stained with Coomassie blue or silver stain can easily be imaged using the white light tray.



UV Imaging  
Ethidium Bromide

## DNA DETECTION WITH ETHIDIUM BROMIDE

With a dual-wavelength 302 nm and 365 nm UV transilluminator, images of ethidium bromide-stained DNA gels can be captured in a fraction of a second. A safety switch prevents accidental exposure to the light sources when the door is open. For band excision, the imager can be operated with the door open and the UV transilluminator can be pulled out. The switch can be overridden with a custom key.



# AZURESPOT PRO ANALYSIS SOFTWARE

AzureSpot Pro helps you interpret your data easily and accurately. Analyze your gels, blots, cell-based assays or arrays in either manual or automatic modes.

Automatically detect bands, even on distorted gels, and apply your selected method of background correction. Visualize intensity plots by lane (sample) and channel (probe) to get detailed information about your proteins of interest.



Download a 30-day trial of AzureSpot Pro

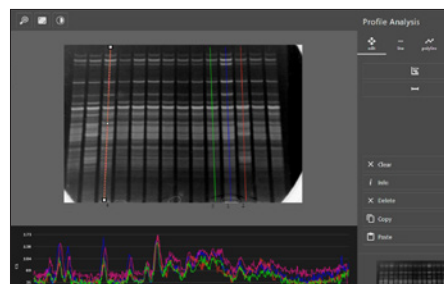
## TOOLS FOR:

2D Densitometry, Automatic Lane and Band Detection, Molecular Weight Analysis, Quantity Calibration, Annotation, Multiplex Analysis, Dendrogram, Colony Counting, Arrays and Plates, and Signal Normalization

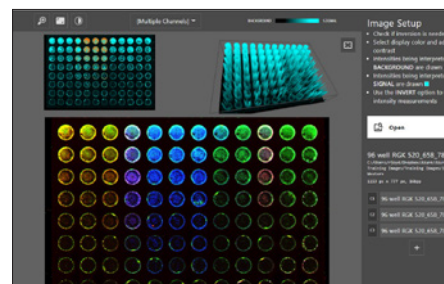
## ANALYSIS MODULES



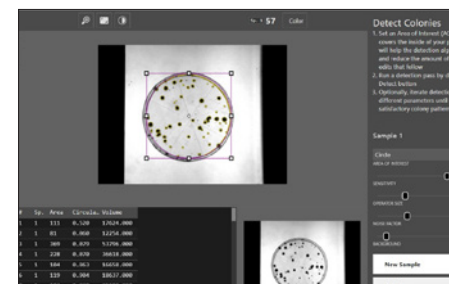
For simple gels with few bands, Area Analysis allows users to draw shapes around areas of interest for quick data results.



Profile Analysis makes it easy to visualize and document trends and similarities within an image.



Arrays and plate-based assays can utilize the Array module's grid-based analysis system which includes options for normalization and presence/absence detection.



The Colony Counter module provides fast and easy counting of spots and features.



## Specifications

	600	500	400	300	280	200
Camera	9.1 MP 16-bit, 65,536 grayscale				6.1 MP 16-bit, 65,536 grayscale	5.4 MP 16-bit, 65,536 grayscale
Peltier Cooling	-50°C regulated cooling					N/A
7 Position Filter Wheel	✓	✓	✓	✓	✓	✓
Trans UV302 and 365nm	✓	✓	✓	✓	✓	✓
Color Imaging/Visible Imaging	✓	✓	✓	✓	✓	✓
Trans-white imaging	✓	✓	✓	✓	✓	✓
Chemiluminescence	✓	✓	✓	✓	✓	
Visible/RGB Fluorescent Imaging	✓		✓			
Epi Blue Light Imaging	✓	✓	✓	✓	✓	✓
TPN Channel	✓	Optional	✓	Optional		
UV Safety Override Switch	✓	✓	✓	✓	✓	✓
Field of View	20.5 x 16.5 cm				20.4 x 16.6 cm	20 x 15 cm
Footprint (W x H x D)	42 x 56 x 33 cm					



**Biozym**  
SCIENCE IS OUR BUSINESS  
[www.biozym.com](http://www.biozym.com)

**Biozym Scientific GmbH**  
Tel.: 05152 / 9020, Fax: 05152 / 2070  
Mail: [support@biozym.com](mailto:support@biozym.com)



Biozym Scientific



@BiozymS



Biozym Scientific



Newsletter



6747 Sierra Court, Suites A-B • Dublin, CA 94568 USA

Phone: 925.307.7127 • Fax: 925.905.1816

[info@azurebiosystems.com](mailto:info@azurebiosystems.com) • [www.azurebiosystems.com](http://www.azurebiosystems.com)

Copyright © 2022 Azure Biosystems. All rights reserved. The Azure Biosystems logo, Azure Biosystems®, Radiance®, and Radiance Plus® are trademarks of the Company. Alexa Fluor®, Coomassie Fluor™, DyLight®, Qdot®, SYBR®, and SYPRO® are trademarks of Thermo Fisher Scientific. Cy3®, Cy5® and Cy2® are registered trademarks of Amersham Biosciences. ECL Plex™ is a trademark of GE Healthcare. GelStar® is a trademark of FMC Corporation. IRDye® is a trademark of LI-COR, Inc. All other trademarks, service marks and trade names appearing in this brochure are the property of their respective owners.

MM-0028 R2