

Lucetta™ Connect Software Instructions

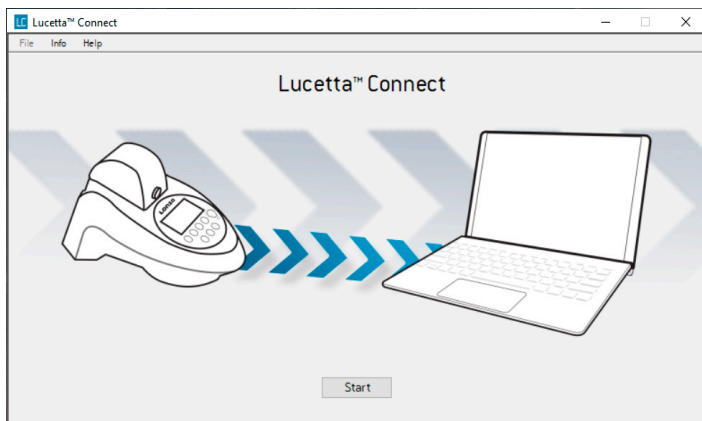
Lucetta™ Connect is a software solution for the easy download and storage of Lucetta™ Results on a PC. For long-term storage, measurement results may be uploaded to a Windows Operating System and viewed and analyzed with Microsoft® Excel®. Data upload to a PC requires installation of the Lucetta™ Connect software on the PC. This software is a separate product and is not included in the Lucetta™ 2 Luminometer shipment. It needs to be ordered individually [Catalog number SAAF-1003].

Before you begin, please install the Lucetta™ Connect software on your PC.

Note

The Lucetta™ Connect software is only compatible with a Windows Operating System (Windows 7 32/64 bit and Windows 10 32/64 bit) and cannot be used on a MacOS or Linux based computer.

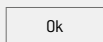
1. Install the Lucetta™ Connect software from the USB stick to your PC.
2. Open the Lucetta™ Connect software on your PC by clicking on the Lucetta™ Connect icon. Press START.



3. Follow the instructions displayed on the screen and press OK.

Getting started

1. Close all other measurement programs running on this PC before starting data transfer from Lucetta™ 2 Luminometer.
2. Connect the Lucetta™ 2 Luminometer to the PC via the USB port of your PC using the USB cable provided.
3. Switch on your Lucetta™ 2 Luminometer.

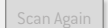


4. A new window opens. Follow the instructions displayed.

To upload measurement results from Lucetta™ 2 Luminometer to PC, perform the following steps on the Lucetta™ Display:

1. In the main menu, navigate to RESULTS and press OK.
2. Select PC UPLOAD and press OK.
3. Press OK to start result transfer.
4. If the transfer was successful, a filter result window opens on your PC.

If the result filter window does not open, press the “Scan again” button.



5. To choose a time frame for which you want to transfer data from the Lucetta™ 2 Device to the PC, select a date and time (Figure 1; for additional details see section 5.3 in the manual). If default time frame is not changed, all data are transferred. You will be able to select a date range with Lucetta™ Connect software after the upload (see step 8). Select START TRANSFER with arrow buttons ▲ ▼ and press OK to start data transfer.



Figure 1: Example of transfer result screen.

6. If the result selection window does not open, press SCAN AGAIN button and repeat the steps 1 to 4 of the instruction window.

Note: When connecting the Lucetta™ 2 Luminometer with a PC for the first time, device installation might be delayed.

- If the data transfer was successful, a result filter window will open in the Lucetta™ Connect software on your PC (Fig. 2).

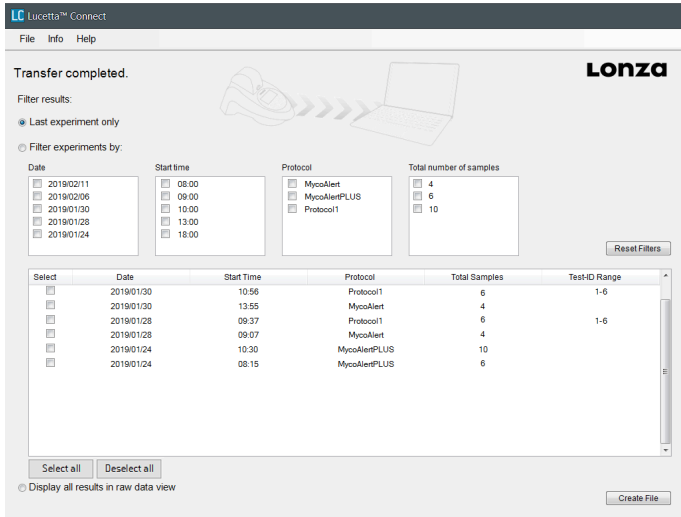


Figure 2: Example of a Lucetta™ Connect result filter window

- Select the results to be saved in result files from the following options:
 - Last experiment only: last experiment is exported and a single result file is created (see Fig. 3).
 - Filter experiments by: select experiments filtered by date, start time of experiment, protocol and number of samples. For each experiment an individual Excel® result file is created.
 - Display all results in raw data view: all data are transferred and displayed in a raw data table (see Fig. 4).

Lonza Lucetta™ 2 Luminometer							
Date:	2018/10/31	3:52					
Protocol:	MycoAlertPLUS						
Sample	Read A	Read B	Ratio Read B/Read A	Result			
1	50	42	0.8	CLEAN			
2	58	24	0.4	CLEAN			
3	62	49	0.8	CLEAN			
4	46	148	3.2	CONTAMINATED			
5	49	438	8.9	CONTAMINATED			
6	47	35	0.7	CLEAN			
7	60	24652	410.9	CONTAMINATED			

Figure 3: Example of a MycoAlert™ Plus Mycoplasma Assay result file.

Lonza Lucetta™ 2 Luminometer													
10/10/18	11:30:37	MycoAlert PLUS	1.2	1	300	600	1	1	3	46	15	0.3	CLEAN
10/10/18	11:30:47	MycoAlert PLUS	1.2	1	300	600	1	2	3	50	59	1.2	BORDERLINE, re-test
10/10/18	11:30:53	MycoAlert PLUS	1.2	1	300	600	1	3	39	2852	73.1		CONTAMINATED
10/12/18	11:57:56	MycoAlert	1.2	0.9	300	600	1	1	6	58	24	0.4	CLEAN
10/12/18	11:58:00	MycoAlert	1.2	0.9	300	600	1	2	6	62	49	0.8	CLEAN
10/12/18	11:58:06	MycoAlert	1.2	0.9	300	600	1	3	6	46	148	3.2	CONTAMINATED
10/12/18	11:58:14	MycoAlert	1.2	0.9	300	600	1	4	6	49	438	8.9	CONTAMINATED
10/12/18	11:58:22	MycoAlert	1.2	0.9	300	600	1	5	6	47	35	0.7	CLEAN
10/12/18	11:58:30	MycoAlert	1.2	0.9	300	600	1	6	6	60	24652	410.9	CONTAMINATED
10/12/18	15:49:14	Protocol 1	10000	5000	5	1	1635	pass					
10/12/18	15:51:00	Protocol 1	10000	5000	5	2	1596	pass					
10/12/18	15:52:12	Protocol 1	10000	5000	5	3	1586	pass					
10/16/18	8:24:49	Protocol 1	10000	5000	10	1	2878	pass					
10/16/18	8:25:21	Protocol 1	10000	5000	10	2	2836	pass					
10/16/18	8:28:26	Protocol 1	10000	5000	10	3	2859	pass					
10/16/18	8:29:24	Protocol 1	10000	5000	10	4	2796	pass					
10/16/18	8:29:44	Protocol 1	10000	5000	10	5	2826	pass					
10/16/18	8:30:03	Protocol 1	10000	5000	10	6	2756	pass					

Figure 4: Example of a Lucetta™ Connect raw data file.

- Press CREATE FILE to obtain result file(s).
- Save result file(s).
 - If only one result file needs to be saved, determine the file name and location in the “Save As” dialog box and press SAVE (see Fig. 5).

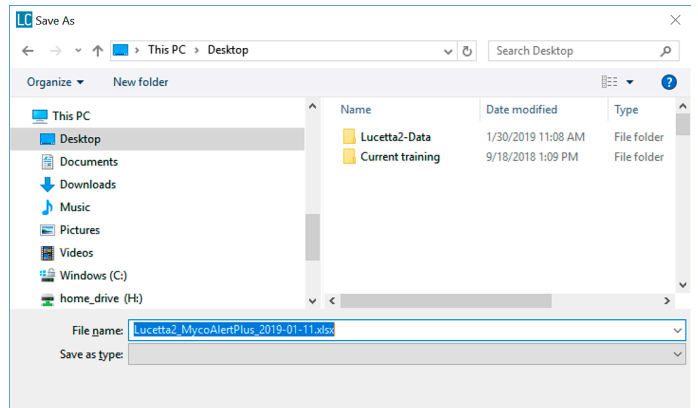


Figure 5: Example of a “Save As” dialog box.

- If multiple result files are to be saved, file names are automatically named following the scheme “Lucetta2_Protocol name_yyyy-MM-dd_hh-mm”. Select or create a folder in the “Browse For Folder” dialog box and press OK to save the result files (Fig. 6).

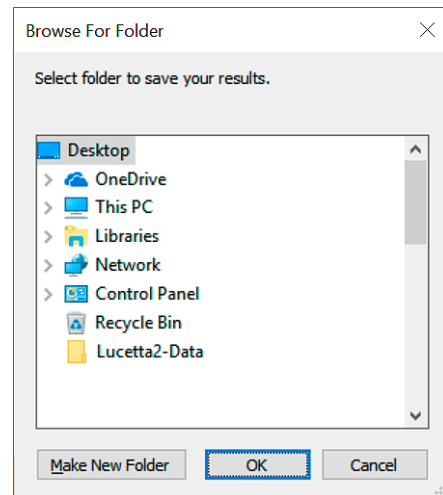


Figure 6: Example of a “Browse For Folder” dialog box.

Copyright © 2019, Lonza. All rights reserved.

Use of Lucetta™ Connect Software

If a Lucetta™ Connect Software has been purchased, the software may be used in concert with one Lucetta™ 2 Luminometer instrument. The purchase of the Lucetta™ Connect Software entitles the user to install the software on several PCs.

You agree that you cannot, and will not transfer, lease or share the Lucetta™ Connect Software, nor will you make access to the software available to other Lucetta™ 2 Luminometer owners, nor permit anyone else to do so.

Contact Information

North America

Customer Service: +1 800 638 8174 (toll free)
Fax: +1 301 845 8338
order.us@lonza.com
Scientific Support: +1 800 521 0390 (toll free)
scientific.support@lonza.com

Europe

Customer Service: +32 87 321 611
order.europe@lonza.com
Scientific Support: +32 87 321 611
scientific.support.eu@lonza.com

International

Contact your local Lonza distributor
Customer Service: +1 301 898 7025
scientific.support@lonza.com

International Offices

Australia	+61 3 9550 0883
Belgium	+32 87 321 611
Brazil	+55 11 2069 8800
China	+86 6430 3488
France	0800 91 19 81 (toll free)
Germany	0800 182 52 87 (toll free)
India	+91 22 4342 4000
Japan	+81 3 6264 0660
Luxemburg	+32 87 321 611
Singapore	+65 6521 4379
The Netherlands	0800 022 4525 (toll free)
United Kingdom	0808 234 97 88 (toll free)

Lonza Cologne GmbH—50829 Cologne Germany

For research use only. Not for use in diagnostic procedures.

Manufacturer and distributor information: The Lucetta™ 2 Luminometer is manufactured by Berthold Technologies GmbH & Co. KG (Calmbacher Str. 22, 75323 Bad Wildbach, Germany) and distributed by Lonza Cologne GmbH (Nattermannallee 1, 50829 Cologne, Germany) and Lonza Walkersville, Inc. (8830 Biggs Ford Road, Walkersville, MD 21793).

Microsoft Windows and Excel are registered trademarks of Microsoft Corporation in the United States and/or other countries.

Unless otherwise noted, all trademarks herein are marks of the Lonza Group or its affiliates. The use of this product, alone or in combination with materials and/or methods of others, may require a license from a third party. User shall be fully responsible for determining whether and from whom it requires such license and for obtaining such license.

The information contained herein is believed to be correct and corresponds to the latest state of scientific and technical knowledge. However, no warranty is made, either expressed or implied, regarding its accuracy or the results to be obtained from the use of such information and no warranty is expressed or implied concerning the use of these products. The buyer assumes all risks of use and/or handling. No statement is intended or should be construed as a recommendation to infringe any existing patent.

©2019 Lonza. All rights reserved.
CD-MN040 01/19