

Visio™

Real-time, visible, in-gel protein stain

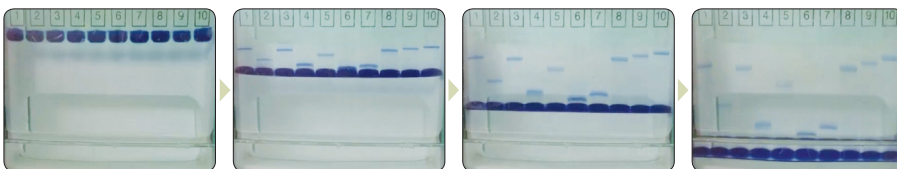
Visio is a sample-loading buffer and protein stain in one. Visio quickly binds to the proteins in your sample before loading, resulting in visible bands that develop during gel electrophoresis. No staining or destaining steps are required. Visio makes it possible to monitor protein electrophoresis in real time, and is completely compatible with downstream mass spectrometry.

Advantages

- **INSTANT RESULTS** – see protein bands immediately as electrophoresis proceeds
- **SENSITIVE** – detect as little as 10 to 25 ng per band
- **FAST PROTOCOL** – no different from standard electrophoresis protocols; samples labeled and ready to load after heating for 10 minutes
- **FLEXIBLE** – use with reducing and non-reducing gels
- **COMPATIBLE** – can be used with downstream mass spectrometry

See your results instantly!

Watch protein bands develop in real time with Visio stain. Instantly monitor the progress of electrophoresis and view results without post-electrophoresis staining or destaining steps. Ideal for use with mass spectrometry and monitoring protein expression.



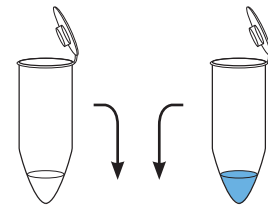
Advansta Solutions

Want answers fast?

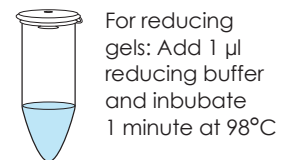
Visio allows you to see your electrophoresis results instantly, with no post-electrophoresis staining or destaining steps.

Protocol

- 1 Mix sample and Visio



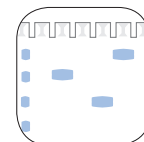
- 2 Incubate 10 minutes at 98°C



- 3 Load gel



- 4 Visualize your bands during electrophoresis; instantly see your results in real time while the gel is running.

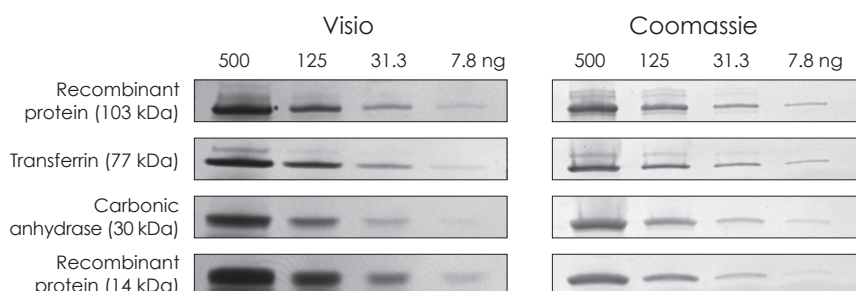


Visio™

Real-time, visible, in-gel protein stain

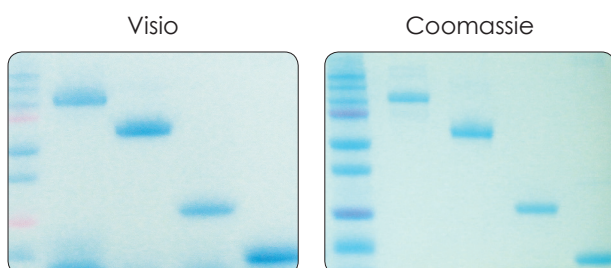
High sensitivity

Detect proteins with sensitivity equal to that of Coomassie staining.



Does not change protein migration

Visio does not affect protein migration in 1D gels. Duplicate samples were run on the same gel. Samples on the left were labeled with Visio before electrophoresis. Samples on the right were stained with Coomassie after electrophoresis.



| | Visio | Coomassie |
|-------------------------------------|-------|-----------|
| No post-electrophoresis processing | ✓ | ✗ |
| No need to wash gel before staining | ✓ | ✗ |
| No need to fix gel before staining | ✓ | ✗ |
| No need to destain gel | ✓ | ✗ |
| No risk of over-staining | ✓ | ✗ |
| Compatible with mass spectrometry | ✓ | ✓/✗ |
| Non-toxic and easily disposed of | ✓ | ✗ |

Ordering Information

| Catalog Number | Product | Size |
|----------------|---|--------|
| 541116 | Visio™ real-time stain for 100 lanes or 10 ten-well gels | 300 µl |
| 541117 | Visio™ real-time stain for 1,000 lanes or 100 ten-well gels | 3 ml |

Advansta Corporation

1505 Adams Drive, Suite B1 | Menlo Park, CA 94025

Tel: 650.325.1980 | Fax: 650.325.1904 | Email: sales@advansta.com

Product information: www.advansta.com/visio

Copyright © 2015 Advansta. All rights reserved. The Advansta logo is a registered trademark of the Company. Visio™ is a trademark of the Company. All other trademarks, service marks and tradenames appearing in this brochure are the property of their respective owners.

www.advansta.com



D-16141-220



Biozym Scientific GmbH – Steinbrinksweg 27 - D-31840 Hessisch Oldendorf
 Tel.: +49 (0)5152-9020 - Fax: +49 (0)5152-2070
 support@biozym.com
 www.biozym.com