



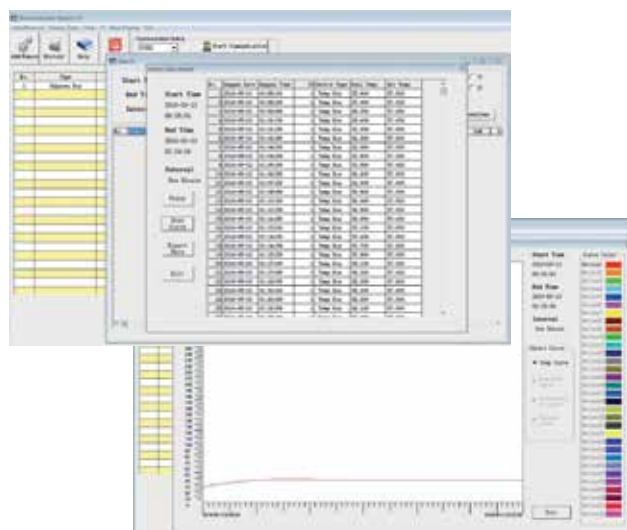
SURETEMP™
Dual-Convection Incubators with SureCheck™ Data Logging

- + Precision temperature control up to 75 °C
- + Dual-Convection, user adjustable to gravity or mechanical convection
- + Stainless steel internal chamber
- + Internal power outlet for shakers, mixers, etc.
- + SureCheck™ data logging port and software

The new Sure-Temp Incubator series provides the highest level of temperature control with uniformity and stability levels that are unmatched by competitive models in the same price class.

Each incubator is equipped with the SureCheck™ data logging system for verification of chamber temperature. The Sure-Check system records temperature data points as often as every 60 seconds and stores this information on a flash drive. The data can then be viewed and saved using the included SureCheck software. The recorded data can also be used to draw a temperature graph or exported to excel for further analysis or manipulation.

Unlike the vast majority of laboratory incubators, the Sure-Temp series offers “Dual-Convection” technology, allowing use to choose between mechanical convection mode (for exceptional uniformity) or gravity convection mode (for longer incubations where drying of plates may be an issue). Heating elements are strategically located on all sides of the chamber and contents can be viewed with the separate inner glass door without disrupting the temperature environment.



Included Sure-Check™ Software:
View/save recorded temperatures



SureCheck data logging port



Internal power outlet

Ordering Information:

| Item No. | Description: |
|---------------|--|
| 55H2505-40-E | SureTemp Dual-Convection Incubator with SureCheck data logging software, 40 l |
| 55H2505-70-E | SureTemp Dual-Convection Incubator with SureCheck data logging software, 70 l |
| 55H2505-130-E | SureTemp Dual-convection Incubator with SureCheck data logging software, 130 l |
| 55H2505-40SH | Extra shelf, stainless steel for 55H2505-40-E |
| 55H2505-70SH | Extra shelf, stainless steel for 55H2505-70-E |
| 55H2505-130SH | Extra shelf, stainless steel fo 55H2505-130-E |

Technical Data:

| | | |
|-----------------------|--|------------------------|
| Temp. Range: | Ambient +5 °C to 75 °C | |
| Temp. Accuracy: | ± 0.25 °C* | |
| Temp. Uniformity: | ± 0.25 °C* | |
| Temp. Stability: | ± 0.1 °C* | |
| Temp. Increments: | 0.1°C | |
| Dimensions: (WxDxH) | Exterior | Interior |
| 55H2505-40-E (40 l) | 57 x 59.2 x 58 cm | 35 x 35 x 35 cm |
| 55H2505-70-E (70 l) | 67 x 59.2 x 68 cm | 45 x 35 x 45 cm |
| 55H2505-130-E (130 l) | 77 x 69.2 x 78 cm | 55 x 45 x 55 cm |
| Weight: | | |
| 55H2505-40-E (40 l) | 42 kg | |
| 55H2505-70-E (70 l) | 62 kg | |
| 55H2505-130-E (130 l) | 70 kg | |
| Electrical: | 230V, 50Hz (420W, 520W, 670W) | |
| Warranty: | 2 Years | |

* Specification provided with a set temperature of 37 °C